

ODISI



ODISI: safeguard the longevity of your green spaces in complete simplicity

Green roofs

Lawns

Sports fields

ODISI: an easy to install and high-performance 2-in-1 solution

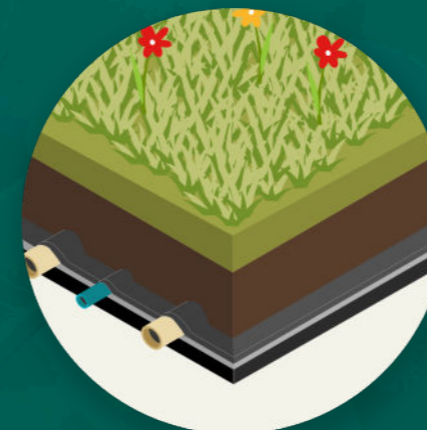
Provides drainage AND irrigation for vegetation, in a single step

When installed between the waterproof layer and the growing medium, it enables:

- Filtering and drainage of rainwater and runoff
- Irrigation of plants with controlled substrate moisture levels
- Better water retention and distribution

- ODISI:**
- Saves time
 - Simplifies the process
 - Saves water

Close-up view of ODISI



Water drainage



Plant watering



Upper filtration layer
 Alternating drainage (yellow) and drip (blue) pipes
 Sub-layer allowing for good water retention and distribution

Drainage and irrigation for green spaces

To improve the resilience of your planted areas



Our experts will help you design your project
 With automated watering, you can rest assured that your planted areas will last.
 ODISI's drip irrigation function also means you save water, and increase sustainability.

- Denser, healthier vegetation
- Less maintenance to achieve an attractive finish
- Easy to install, combining drainage and irrigation

ODISI: step-by-step installation – example

Green roof

Positioning ODISI:

Position ODISI on the waterproof roof covering. Unroll the sheet in the direction of the slope, and cut to the desired size. ODISI can also be cut lengthwise to fit narrow spaces. Where two sheets join, they should be overlapped, keeping layout consistent (alternating drip and drain). The weight of the growth medium will hold the sheets in place. After cutting the sheet, draw the drip pipes from the roof ridge (leaving 4 in. extra clearance) so that they can be subsequently connected.



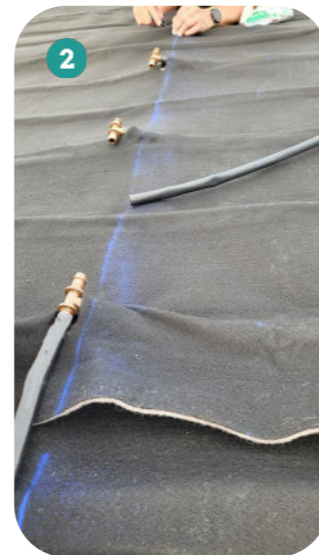
Drip irrigation:

About 16 to 32 in. from the edge of the sheet (depending on the length and slope), open a 1/2-in. hole in the sheet to cut out the drip pipes.

- 1 In the position closest to the sheet edge, fit a barbed elbow fitting
- 2 At each drip pipe outlet, place a barbed T fitting.
- 3 Then connect these with the other drip fittings every 20 in. At the end of the run, close the circuit with a second barbed elbow fitting.



Before cutting, make sure the pipes for the drip irrigation have been drawn from the roof ridge.



At the roof ridge, connect with the post-filtration water supply line. Automated watering is advised. For this, solenoid valves must be installed.

Placement of the growth medium, substrate/Urbanscape®:

Unroll the Urbanscape Green Roll perpendicular to the sheet (example here) or spread the substrate in an even layer. Next, position the vegetation (shown here as rolls of sedum, sod, and seedlings) on the substrate.



Water well at the time of planting and in the following months.



Drainage:

The drains empty into the rainwater collector. If you connect it to a water tank, you can reuse the water to irrigate the roof vegetation.

Benefits of our system



Rainwater management
Storage during rainy times and reuse during dry periods



Air quality
CO2, pollution



Green space resiliency



Water savings



Health and well-being
social connection,
psychological well-being



Fight against urban heat islands
vegetation can reduce ambient temperatures by 5 to 10°F



Biodiversity promotion
Fauna, flora: contribution to green urban corridors



Ease of installation
Healthy plants, less maintenance

Our values

Relationships

We take pride in the confidence shown in us by our clients, focusing on their needs to develop new solutions.

Collaboration

We aim to connect different players in the vegetation space to build innovative solutions together.

Innovation

By keeping a close eye on market trends and leveraging our excellent supplier relations, we are able to pool expertise to create customized solutions.

Contact: contact@odysseelab.com

Website: www.odysseelab.com

